

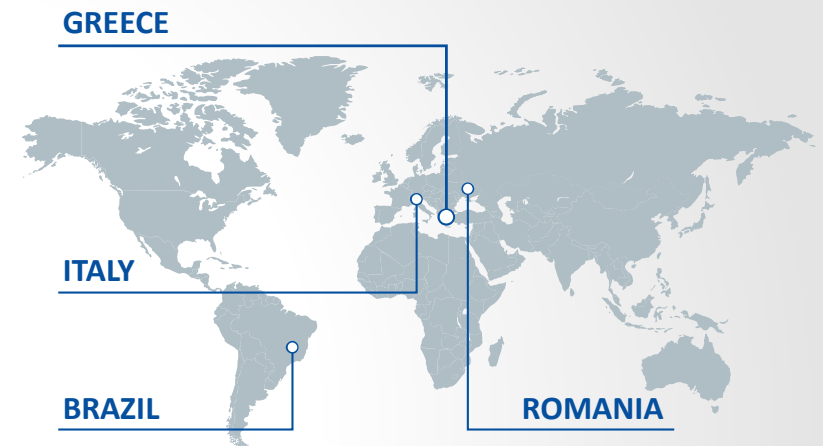




SABO Group has been created over the years starting from the core company SABO S.A. which was founded in 1984 in Greece by Mr. Dimitris Kiliaris.

The headquarters, as well as the major production plant, are situated in a privately owned 25.000 m² area in Vassiliko of Evia in Greece.

With subsidiary companies in Italy, Romania, and Brazil and a team of high qualified engineers and technicians, SABO Group delivers turnkey plants in several industrial sectors around the globe by offering nothing less than the most superior quality in materials, equipment and workmanship.





4 Sites

28.500m² Premises

250 Employees



We are where you need us to be!



Group Operations at Glance



Turnkey Plants & Machinery for the Heavy Clay Industry



Robotic Applications
Handling-Conveying Systems
Heavy industry Maintenance - Reinstallations



Integrated Waste Management Facilities



Electrical & Industrial Automation, Process control (PLC-SCADA)



Sites in Romania, Brazil,
Tech office in Italy

Augers, dies, frames, cores, spare parts for heavy clay extrusion

Civil Works & Buildings for Industrial Plants





History timeline



1984
SABO S.A. establishment
1st automation for Heavy Clay sector



1985
1st Kiln construction



1990
1st project abroad in Algeria (HC sector)



1991
1st Turnkey Plant assignment (HC sector)



1992
SICAP S.A. was founded



1993
Completion of 1st Turnkey Plant (HC sector)



1994
1st extension of production facilities
SABO Industrial Solutions segment
1st project for BSH



1995
1st project for Frigoglass



1996
SABO Filiere S.A. was founded



1998
1st project for roofing tiles in "U cassette" technology (HC sector)



2000
1st project for Larco
1st project for 3E
1st project for SOYA

2001
Representatives and exports for Tunisia
1st Rapid Dryer



2003
Representatives and exports for Algeria



2004
2nd extension of production facilities
1st Robot installed (HC sector)



2005
Exports to Hungary
1st contract with Wienerberger (HC sector)
1st project for roofing tiles in "H cassette" technology



2006
Manufacturing of Gas Burners



2007
SABO System is established in Italy
1st electronic cutter (HC sector)



2008
Investment in workshop



2009
SABO Energy segment
3rd extension of production facilities
1st project in Russia (HC sector)



2010
Start of production in SABO Romania
1st complete grinding line (HC sector)

2011
1st Complete project in Turkey (HC sector)



2012
1st Completed Turnkey plant in Belgium (HC sector)



2013
SABO Impianti is established in Brazil
SABO Environmental segment
1st project in Brazil (HC sector)
10th project for Wienerberger (HC sector)



2014
Representatives and exports for China and Malaysia
1st project in Peru, Mexico, China, Belarus, Iraq, Iran (HC sector)



2015
1st Completed Turnkey plant in Saudi Arabia
1st project in Colombia (HC sector)



2016
1st project for Environmental sector
1st project in United Kingdom (HC sector)



2017
1st project in Uzbekistan (HC sector)



2018
1st project with Elval-Halcor
1st project in USA





Customer Needs



Mechanical

Electrical



Study
Design
Programming

40

21

19



Manufacturing

86

70

16



Installation
on site

45

35

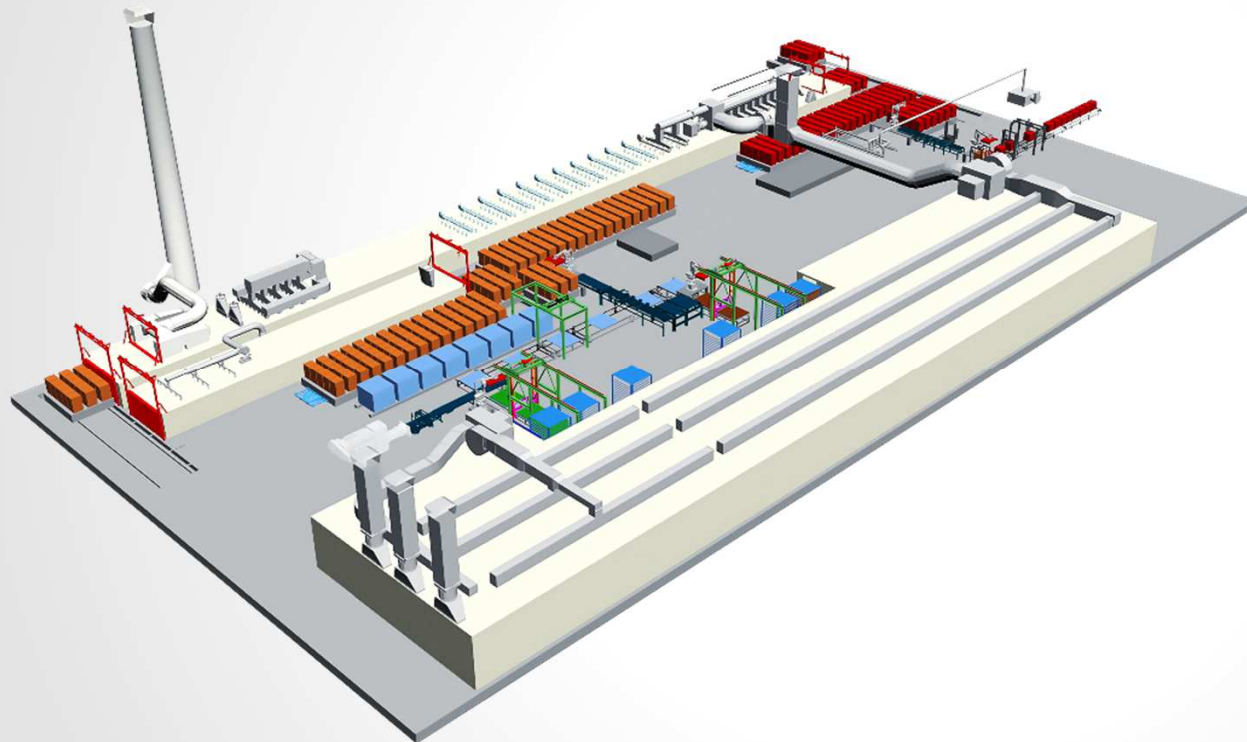
10



Turnkey Plants



Covering all your needs, from the idea to the final result



experience & technical know-how
35
years

global presence in
53
countries

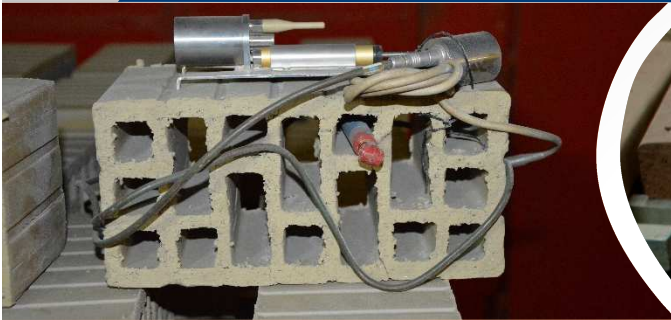
more than
400
completed projects

Study | Engineering & Design | Construction | Installation | Maintenance & After Sales Service



Performing geological studies
and drilling works



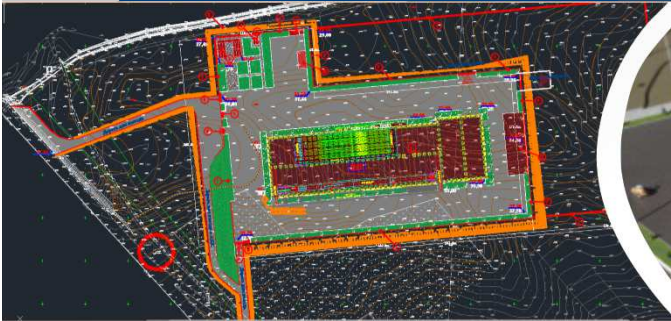


Analyses of clay materials
Laboratory services





Turnkey Plants



SABO provides all foundation and technical drawings according to study





Construction Works...





Construction Works...





Turnkey Plants

Construction Works...





Construction Works...





Turnkey Plants



Final Result







Integrated Waste Management Facilities





Integrated Waste Management Facilities





Heavy Industry

Construction - Installation - Maintenance

Robotic Applications Handling & Conveying systems



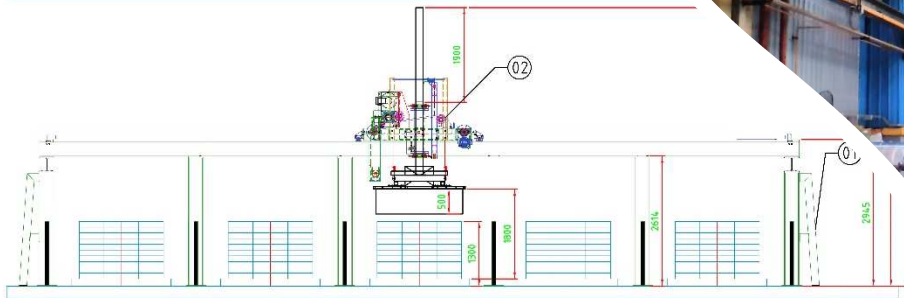
Heavy Industry - Construction of Machinery



ΑΓΕΤ



Larko



Geohellas



Soya Hellas





Heavy Industry - Installation of production lines



Crown

Icme

Crown

Halcor

Icme



Heavy Industry - Maintenance Interventions





Robotic Applications - Handling & Conveying systems





Electrical & Industrial Automation
Remote Data Acquisition System [RDA]



Electrical & Industrial Automation





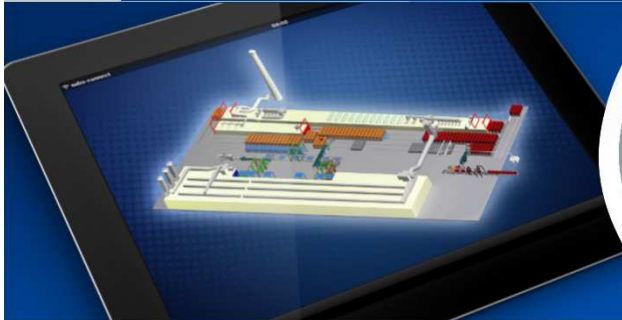
This project consists in:

- Remotely acquire data from factories/machines constructed by SABO or not.
- Custom reporting and trending for the recorded data (mandatory).
- Data manipulation, statistical analysis (mandatory).
- Publish data over internet to authorized accounts (mandatory).
- Vendor / platform agnostic service.
- Create a web based environment for data visualizations (optional but nice to have).





Remote Data Acquisition System (RDA) / Scope - Added Value



Scope:

- To provide visualization, reporting, KPI services to customers, concerning their industrial installations.
- To “advance” SCADA functionality by publishing data over the internet with low cost.
- To act as a provider (Industry 4.0*) of the above services even to customers that they don't buy solutions from SABO.

Added Value:

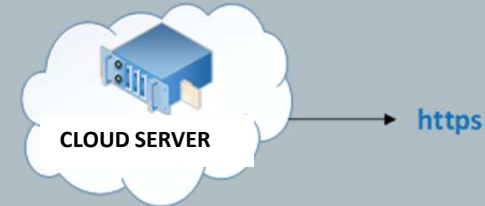
- Process wise parametrization of the customers installation
- Decision-making algorithms for improving production, cost, efficiency etc.
- Proactive maintenance for the machinery
- Event creation and management



Remote Data Acquisition System (RDA) / Technical Proposal - Service Provider

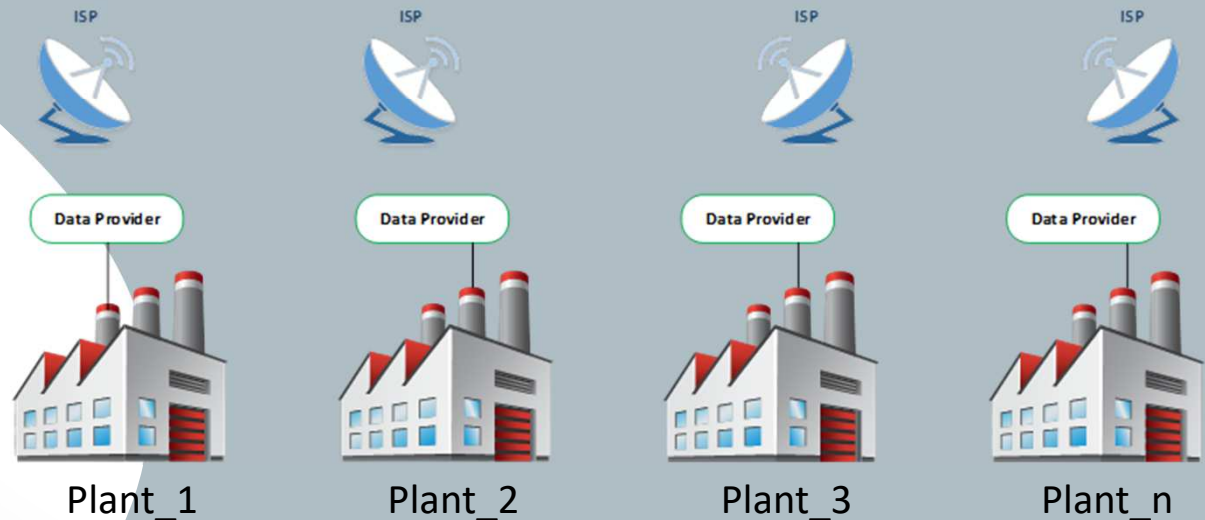
Prerequisites

- Internet connection.



Architecture

- The data provider is installed in the SCADA computer. Reads and transmits data from the SCADA DB or directly from the PLC's to "our" cloud server/platform.
- The cloud platform processes data, produces reports and publishes them through internet to the customer.





Major customers & partners

Clients



Suppliers



Bankers



Greece



SABO S.A.

34002 Vassiliko - Chalkida
Evia - Greece
tel.: +30 22210 51805-9
fax: +30 22210 54073
email: sb_info@sabo.gr
www.sabo.gr



SABO Filiere S.A.

34002 Vassiliko - Chalkida
Evia - Greece
tel.: +30 22210 50405-6
fax: +30 22210 50407
email: s-filiere@sabo.gr
www.sabo-filiere.com



SICAP S.A.

34002 Vassiliko - Chalkida
Evia - Greece
tel.: +30 22210 55057
fax: +30 22210 61911
email: sicap@sabo.gr
www.sicap.gr

Romania



SABO Utilaje si Automatizari S.R.L.

Sos. Bucuresti - Urziceni nr.291
Afumati – Ilfov
Bucharest - Romania
telefax: +40 31 4387046
email: sales@sabogroup.ro
www.sabogroup.ro

Italy



SABO System S.R.L.

Corso Francia 68
10143 Turin - Italy
tel.: +39 011 7499535
fax: +39 011 7506707
email: info@sabosystem.it

Brazil



SABO Impianti Ltda

Rua José Manoel da Rocha
155 - Vila Progresso
Itu, Sao Paulo - Brazil - 13313-501
tel.: +55 (11) 4024-4983
email: contato@saboimpianti.com.br
www.saboimpianti.com.br

