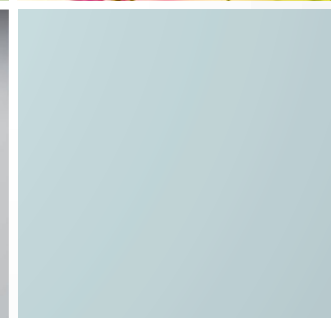
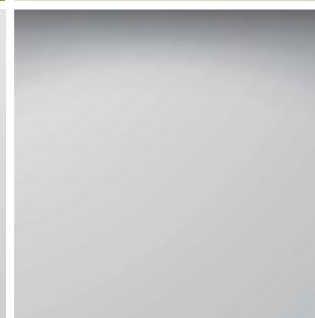
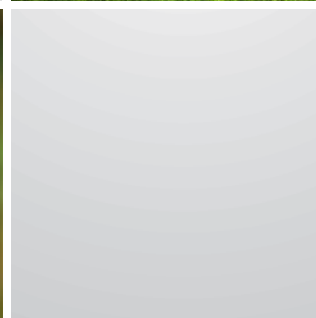
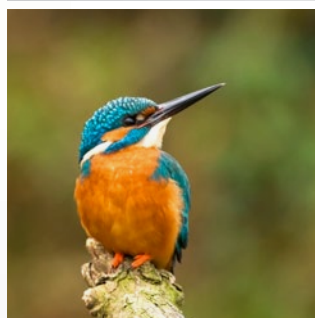
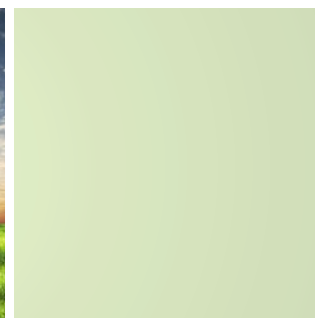
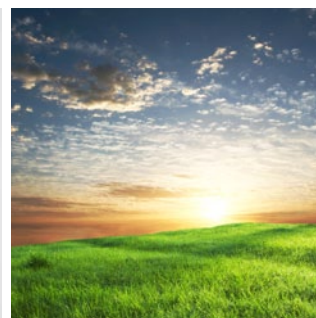
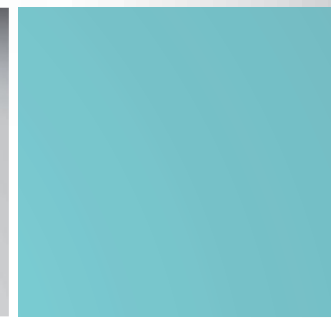
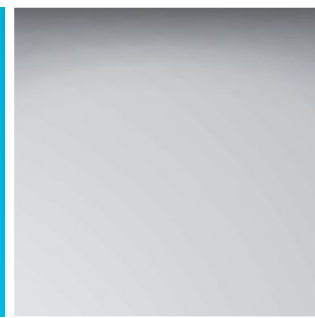
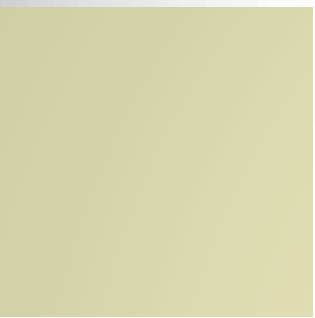
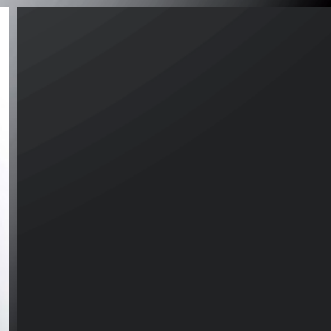
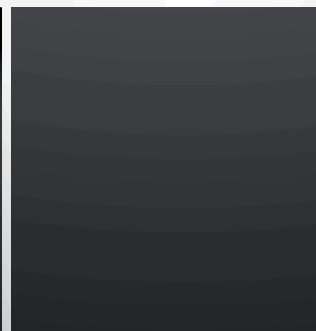
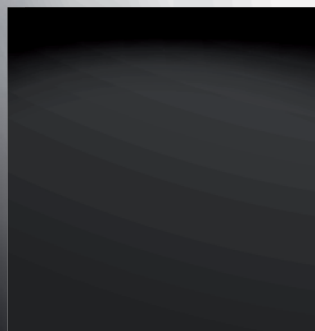


Czech University of Life Sciences Prague
Faculty of Environmental Sciences



Master study programmes



Would you like to study
environmental sciences abroad?

Would you like to **meet people**
from all around the world?

Are you interested in historical and modern places
at the same time and in the same place?

Do you want to study
an **English master** programme?

Come and study in the Heart of Europe!

Why should you choose the Czech University of Life Sciences (CULS)?

Over 17 000 students apply to CULS each year. There are a total of over 22 000 students at the university. Approximately 5 000 students graduate each year. CULS cooperates with many international organisations, e.g. the Euroleague for Life Sciences (ELLS), the International Consortium for Agricultural and Related Sciences in Europe (ICA), UNESCO, FAO, WMO, etc.

Programme mobility scheme

Our programmes are supported by the EU Erasmus+ programme, the programmes of the Czech Ministry of Education, Youth and Sports, and other mobility programmes. For further information, please click on to

www.fzp.czu.cz/internationalstudies

Entrance requirements

Candidates for master programmes must be graduates of a three-year or longer bachelor study programme at a university, or a recognized equivalent.

Practical information

The studies are organized on a full-time basis. Graduates of a master programme are awarded the Czech academic title "Ing." (a master degree equivalent to MSc.). The international recognition of the title is facilitated by the graduate's diploma supplement in English language, which provides a description of the nature, level, content and status of the degree. Detailed information about the study application process, tuition fees, academic calendar and admission requirements is provided on the master programme web pages: www.fzp.czu.cz/studiesatfes/.

The CULS Campus

The faculty is located on the main CULS campus, in a quiet part of Prague close to Prague airport. It is fully equipped with all that you will need for a comfortable life and successful studies.

In addition, there is a wide range of sports facilities and a number of restaurants and clubs within the campus. Using the city transportation system (bus and subway), it takes approximately 20 minutes to reach the centre of Prague. The campus thus provides a good range of facilities for studying, living and cultural life, together with all the advantages of the capital city.

You will enjoy our modern lecture halls, and you will also be able to visit many places and see the beauty of the Czech Republic on excursions and field trips.

Our master programmes are here for you to improve your theoretical and practical knowledge and understanding of environmental issues

The Faculty of Environmental Sciences at the Czech University of Life Sciences (CULS) is one of the leading faculties dealing with environmental protection in the Czech Republic. The Faculty is located in Prague, the capital city of the Czech Republic. CULS is a member of the ELLS consortium, a network of leading universities cooperating in the fields of natural resources management, agricultural and forestry sciences, life sciences, veterinary sciences, food sciences, and environmental sciences.

We offer **four two-year master programmes** for foreign students, all of which are taught in English language.

The courses are presented by **experienced professors and specialists** with an extensive international research background. Our graduates have very good job prospects in various institutions specializing in environmental conservation, landscape planning, water resources management, and also in other fields of employment offering further professional growth.



You can choose one of the following programmes

Master study programmes

Environmental Modelling

The graduate-degree study programme offered in English for Environmental Modelling (ENVA) is open for students with a bachelor degree in a relevant subject area who wish to acquire advanced knowledge and professional skills in describing environmental processes, with emphasis on modelling. Students learn to model the transport of pollutants and contaminants in different environments, and to describe the transport processes in the atmosphere, soil, groundwater and surface water. Graduates are able to combine advanced knowledge of applied mathematics and informatics with descriptions of processes. They are prepared for positions as environmental process modelers and as engineers working for national and international institutions. The two-year study program in ENVA is perhaps our most technical and advanced science-based degree and consists of required courses and research-based field studies. Course work includes: environmental hydrology, computational hydraulics, geochemistry, computer modelling, groundwater hydraulics, fluid mechanics, applied hydrogeology and applied hydroinformatics.

Environmental Geosciences

The master's study programme Environmental Geosciences (EGS) taught in English is open for bachelor graduates in Applied Ecology, Geology or similar fields. The programme provides a solid theoretical and practical background in Earth Sciences; students will be able to identify and analyse specific environmental issues linked to Earth Sciences; they will work independently in various laboratories at the Faculty and present their results during seminars, field excursions and workshops. Students will gain insight into various disciplines, e.g., Geology, Environmental Hydrogeology, Paleoecology, Environmental Geochemistry and Mineralogy. Graduates are prepared for positions in science and engineering in the field of environmental remediation or as a specialist working for national and international institutions.

Landscape Planning

This exciting new degree programme blends together elements of landscape architecture, applied landscape ecology, spatial and regional planning, landscape history and natural sciences. It is open to graduates with a background in environmental sciences, landscape ecology, conservation biology, urban-regional or spatial planning, landscape architecture, civil engineering, and other related earth-science studies.

Students learn by working on real projects and become skilled in applied sustainable land use planning and resource management. We often focus this work on the dynamic and varied landscape of the Czech Republic, however, students also have opportunities to travel to neighbouring countries in Central Europe to explore how sustainable approaches to landscape planning can be applied elsewhere.

LPA is an accredited degree programme required for practice of landscape engineering and design in the Czech Republic, and applicable to international locations.

Nature Conservation

The masters degree study programme offered in English for Nature Conservation (NCO) is open for graduates of the bachelor study programme in Applied Ecology, and for degree-holders with a background in ecology, biology, zoology, botany, conservation biology, landscape ecology or environmental sciences.

The NCO Masters of Science degree provides a solid understanding in both applied and theory-based resource conservation and management, based on principles of applied landscape ecology. NCO is an accredited degree programme required for practice of management of protected landscape areas with the Nature Conservation Agency of the Czech Republic, and applicable to international locations. The studies focus on sustainable natural resources; students will acquire advanced knowledge on a range of methods for conserving the biosphere, applied landscape ecology, land reclamation, water-course revitalization, ecological stress and rehabilitation technology, game management, and methods of environmental assessment.

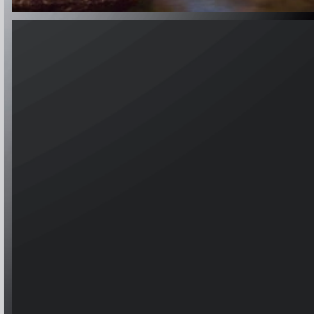
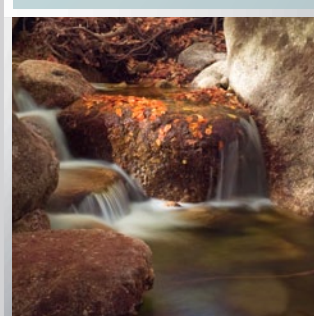
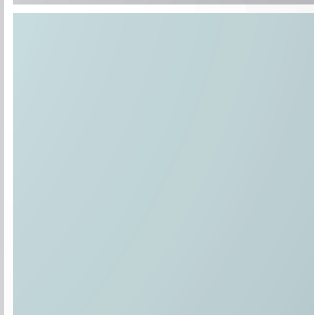
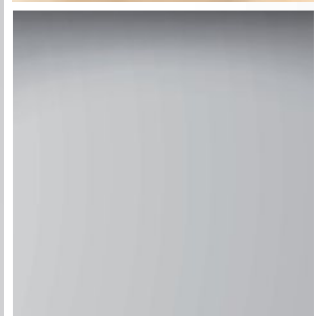
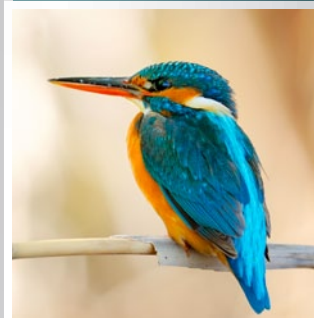
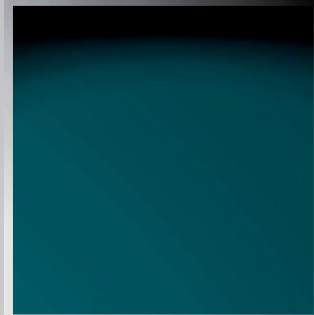
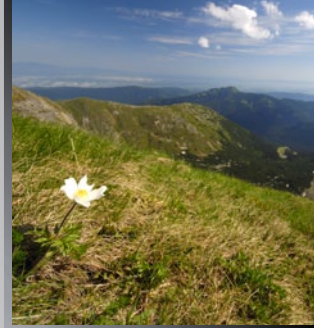
Intensive Courses and Summer Schools

The faculty organizes **very popular Intensive Training Courses and Summer Schools** for students every year. Our Summer Schools are professionally organized short intensive courses in which you will come into contact with other students, postgraduates and young professionals. The topics cover various themes in environmental sciences, and the focus is on presenting modern solutions.

For further information about our Intensive Training Courses and Summer Schools, please click on to the faculty websites.

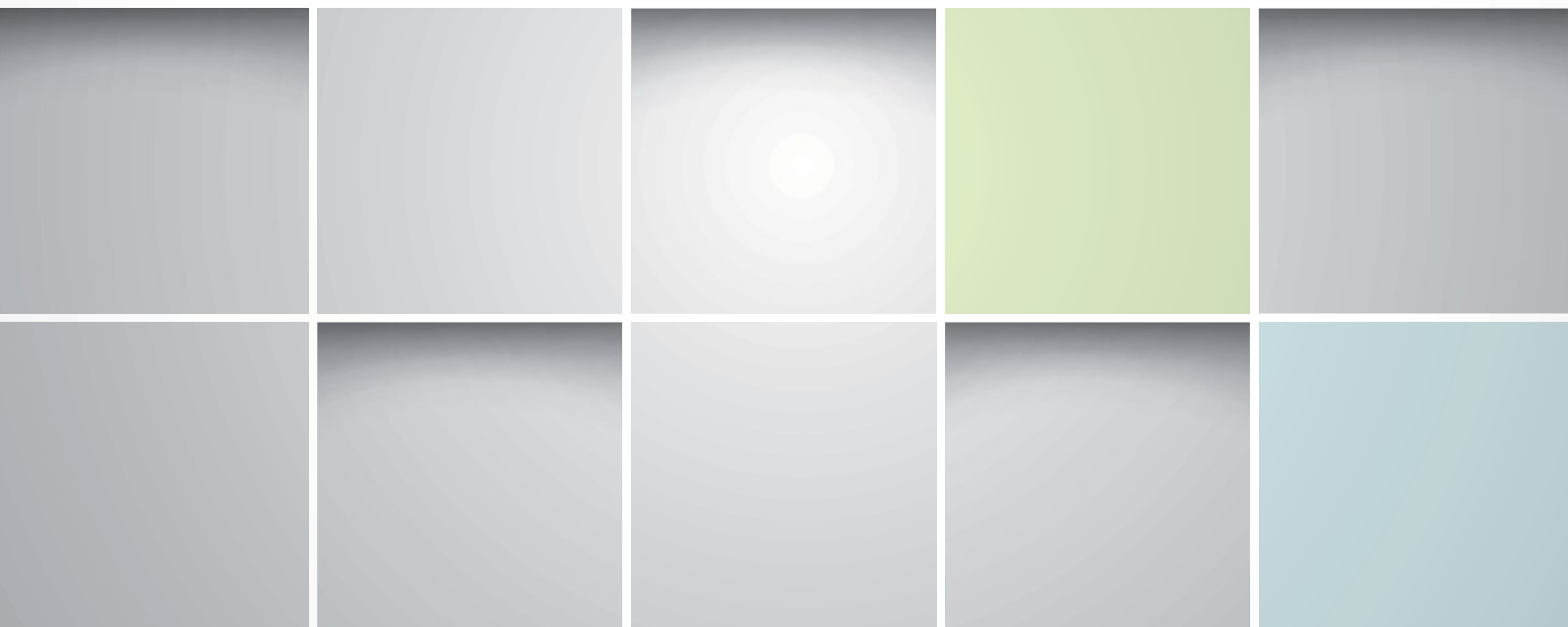
Application deadlines

The deadline for applications usually is March 31. Please use the **on-line application form**, which is available from December on the application form webpages: <http://prijimacky.czu.cz/>. The final statement of admission is sent before the end of May. More detailed current information can be found on the faculty's web site www.fzp.czu.cz/en/ or <http://www.fzp.czu.cz/studiesatfes/>.



The application process consists of the following steps

- Applicants submit their application and all relevant documents
- The Dean's Office confirms that it has received the application form
- The Dean's Office calculates the fee that is payable and offers the applicant a place on a study programme
- The applicant pays the application fee
- The Dean's Office notifies the applicant that she/he has been admitted to the study programme



Contact address for applications

Address:
**Faculty of Environmental Sciences,
Czech University of Life Sciences Prague**

Kamýcká 129
165 21 Prague 6 – Suchbátov

Tel. +420 22438 2147
e-mail: internationaloffice@fzp.czu.cz

Websites:
www.fzp.czu.cz/en
www.fzp.czu.cz/studiesatfes/

